



# Baines School

Nil Sine Labore

The Governors of Baines School

## Child On Child Abuse Policy

DSL	Jane Macfarlane
Deputy DSL(s)	Katy Streetly Clare Doherty Adam Moseley
Safeguarding Governor	Tom Holland
Last Updated	December 2025
Approved by the Governing Body	February 2026
Date of Next Review	February 2027

Next Review Due	November 2025
-----------------	---------------

## **The School's Responsibilities**

The governors, senior leadership team, and all staff (term shall apply to all volunteer staff members also) at Baines School are committed to the prevention, early identification, and appropriate management of child-on-child abuse (as defined below) both within and beyond the school. In particular, we believe that in order to protect children, all schools should:

- be aware of the nature and level of risk to which their students are or may be exposed, and put in place a clear and comprehensive strategy which is tailored to their specific safeguarding context
- take a whole-school community contextual safeguarding approach to preventing and responding to child on child abuse
- engage proactively with parents/carers and seek their support for the school's child-on-child abuse policy and their readiness to challenge any behaviour at home which could constitute partial or full condolence of inappropriate peer relationships and other friendships.

*We regard the position and use of this policy as a preventative measure.*

We do not feel it is acceptable merely to take a reactive approach to child-on-child abuse in response to alleged incidents of it.

We believe that in order to tackle child-on-child abuse proactively, it is necessary to focus on all four of the following areas:

- Systems and Structures
- Prevention
- Identification
- Response/Intervention

We recognise national and increasing concern about this issue, and implement this policy in order to mitigate harmful attitudes and child-on-child abuse in the school setting, and encourage parents/carers to hold us to account on this issue, so that if their child is feeling unsafe as a result of the behaviour of any of their peers, they should inform the school so that it can ensure that appropriate and prompt action is taken in response.

This policy is the school's overarching policy for any issue that could constitute child-on-child abuse. It relates to, and should be read alongside, the school's safeguarding/child protection policy and any other relevant policies including, but not limited to the anti-bullying policy, drugs policy, data protection policy, allegations of abuse policy and social media policy.

This policy sets out our strategy for improving prevention, and identifying and appropriately managing child on-child abuse.

This policy applies to all governors, the senior leadership team, and staff. It is reviewed annually, and updated in the interim, as may be required, to ensure that it continually addresses the risks to which students are or may be exposed.

It recognises that abuse is abuse, and should never be passed off as 'banter', 'just having a laugh', or 'part of growing up'.

This policy is compliant with the statutory guidance on child-on-child abuse as set out in *Keeping Children Safe in Education* (September 2025).

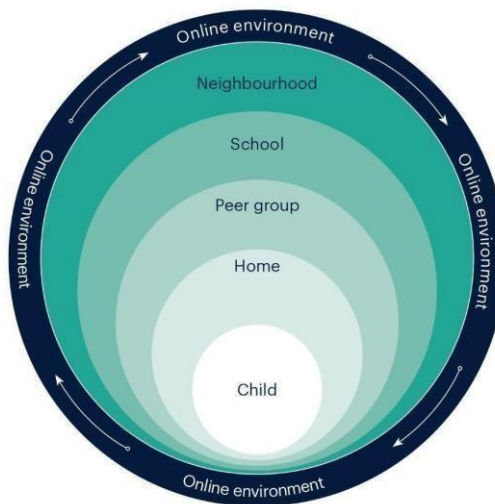
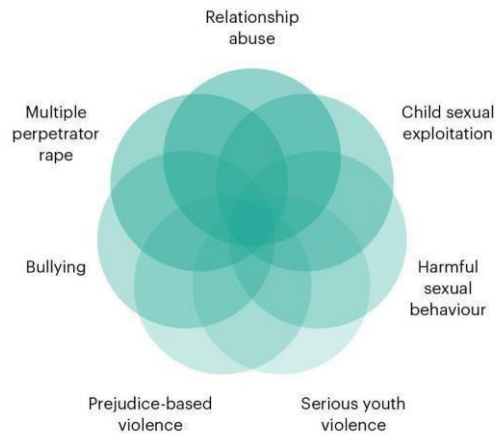
It does not use the term 'victim' and/or 'perpetrator'. This is because our school takes a safeguarding approach to all individuals involved in concerns or allegations about child-on-child abuse, including those who are alleged to have been abused, and those who are alleged to have abused their peers, in addition to any sanctioning work that may also be required for the latter. Research has shown that many children who present with harmful behaviour towards others, in the context of child-on-child abuse, are themselves vulnerable and may have been victimised by peers, parents/carers or adults in the community prior to their abuse of peers.

The policy uses the terms 'child' and 'children', which is defined for the purposes of this policy as a person aged under 18. We have nonetheless chosen not to restrict our approach to child-on-child abuse under this policy to children but instead to adopt a wider interpretation of our safeguarding responsibilities so that they apply to all students, regardless of age.

### **Understanding Child-on-Child Abuse**

For these purposes, child-on-child abuse is any form of physical, sexual, emotional and financial abuse, and coercive control, exercised between children, and within children's relationships (both intimate and nonintimate), friendships and wider peer associations. Child-on-child abuse can take various forms, including (but not limited to): serious bullying (including cyber-bullying), relationship abuse, domestic violence and abuse, child sexual exploitation, youth and serious youth violence, harmful sexual behaviour, and/or prejudice-based violence including, but not limited to, gender-based violence.

Examples of online child-on-child abuse would include sexting, online abuse, child-on-child grooming, the distribution of youth involved sexualised content, and harassment.



**What is Contextual Safeguarding?** This policy:

1. encapsulates a Contextual Safeguarding approach, which is about changing the way that professionals approach child protection when risks occur outside of the family, thereby requiring all those within a Local Safeguarding Partnership to consider how they work alongside, rather than just refer into, children’s social care, to create safe spaces in which children may have encountered child-on-child abuse.
2. adopts a whole-school community Contextual Safeguarding approach, which means:
  - being aware of and seeking to understand the impact that these wider social contexts may be having on the school’s students,
  - creating a safe culture in the school by, for example, implementing policies and procedures that address child-on-child abuse and harmful attitudes; promoting healthy relationships and attitudes to gender/ sexuality; hotspot mapping to identify risky areas in the school; training on potential bias and stereotyped assumptions,
  - being alert to and monitoring changes in students’ behaviour and/or attendance, and
  - contributing to local child protection agendas by, for example, challenging poor threshold decisions and referring concerns about contexts to relevant local agencies (see section entitled ‘multi-agency working’).

## How prevalent is child-on-child abuse?

Research suggests that child-on-child abuse is one of the most common forms of abuse affecting children in the UK. For example, more than four in ten teenage schoolgirls aged between 13 and 17 in England have experienced sexual coercion. Two thirds of contact sexual abuse experienced by children aged 17 or under was committed by someone who was also aged 17 or under.

## When does behaviour become problematic or abusive?

All behaviour takes place on a spectrum. Understanding where a child's behaviour falls on a spectrum is essential to being able to respond appropriately to it.

## Sexual Behaviours

Professor Simon Hackett of Durham University has proposed the following continuum model to demonstrate the range of sexual behaviours presented by children, which may be helpful when seeking to understand a student's sexual behaviour and deciding how to respond to it.

### Sexual Behaviours Continuum Model

Normal	Inappropriate	Problematic	Abusive	Violent
<ul style="list-style-type: none"><li>• Developmentally expected</li><li>• Socially acceptable</li><li>• Consensual, mutual, reciprocal</li><li>• Shared decision making</li></ul>	<ul style="list-style-type: none"><li>• Single instances of inappropriate sexual behaviour</li><li>• Socially acceptable behaviour within peer group</li><li>• Context for behaviour may be inappropriate</li><li>• Generally consensual and reciprocal</li></ul>	<ul style="list-style-type: none"><li>• Problematic and concerning behaviours</li><li>• Developmentally unusual and socially unexpected</li><li>• No overt elements of victimisation</li><li>• Consent issues may be unclear</li><li>• May lack reciprocity or equal power</li><li>• May include levels of compulsivity</li></ul>	<ul style="list-style-type: none"><li>• Victimising intent or outcome</li><li>• Includes misuse of power</li><li>• Coercion and force to ensure victim compliance</li><li>• Intrusive</li><li>• Informed consent lacking, or not able to be freely given by victim</li><li>• May include elements of expressive violence</li></ul>	<ul style="list-style-type: none"><li>• Physically violent sexual abuse</li><li>• Highly intrusive</li><li>• Instrumental violence which is physiologically and/or sexually arousing to the perpetrator</li><li>• Sadism</li></ul>

Hackett's continuum relates exclusively to sexual behaviours and is not exhaustive. The [Brook Sexual Behaviours Traffic Light Tool](#) can help professionals working with children to distinguish between three levels of sexual behaviour – green, amber and red, and to respond according to the level of concern. [Harmful Sexual Behaviour Framework 2019 \(excerpt\)](#)

## Other Behaviour

When dealing with other alleged behaviour which involves reports of, for example, emotional and/or physical abuse, staff may draw on aspects of Hackett's continuum to assess where the alleged behaviour falls on a spectrum and to decide how to respond. This could include, for example, whether it:

- is socially acceptable,
- involves a single incident or has occurred over a period of time,
- is socially acceptable within the peer group,
- is problematic and concerning,
- involves any overt elements of victimisation or discrimination e.g. related to race, gender, sexual orientation, physical, emotional, or intellectual vulnerability,
- involves an element of coercion or pre-planning,
- involves a power imbalance between the child/ children allegedly responsible for the behaviour and the child/children allegedly the subject of that power ● involves a misuse of power.

### **How can a child who is being abused by their peers be identified?**

All staff should be alert to the well-being of students and to signs of abuse, and should engage with these signs, as appropriate, to determine whether they are caused by child-on-child abuse. However, staff should be mindful of the fact that the way(s) in which children will disclose or present with behaviour(s) as a result of their experiences will differ.

The School's Pastoral Team will regularly review behaviour incident logs which will help to identify any changes in behaviour and/or concerning patterns or trends at an early stage.

### **Are some children particularly vulnerable to abusing or being abused by their peers?**

Any child can be vulnerable to child-on-child abuse due to the strength of peer influence during adolescence, and staff should be alert to signs of such abuse amongst all children. Individual and situational factors can increase a child's vulnerability to abuse by their peers. For example, an image of a child could be shared, following which they could become more vulnerable to child-on-child abuse due to how others now perceive them, regardless of any characteristics which may be inherent in them and/or their family.

Peer group dynamics can also play an important role in determining a child's vulnerability to such abuse. For example, children who are more likely to follow others and/or who are socially isolated from their peers may be more vulnerable to child-on-child abuse. Children who are questioning or exploring their sexuality may also be particularly vulnerable to abuse by their peers. **Suggested Research**

Child-on-child abuse may affect boys differently from girls, and that this difference may result from societal norms (particularly around power, control and the way in which femininity and masculinity are constructed) rather than biological make-up. Barriers to disclosure will also be different.

As a result, schools need to explore the gender dynamics of child-on-child abuse within their settings, and recognise that these will play out differently in single sex, mixed or gender-imbalanced environments,

Children with Special Educational Needs and/or Disabilities (SEND) are three times more likely to be abused than their peers without SEND, and additional barriers can sometimes exist when recognising abuse in children with SEND.

These can include:

- assumptions that indicators of possible abuse such as behaviour, mood and injury relate to a child's disability without further exploration,
- the potential for children with SEND to be disproportionately impacted by behaviours such as bullying and harassment, without outwardly showing any signs,
- communication barriers and difficulties ● overcoming these barriers.

Some children may be more likely to experience child-on-child abuse than others as a result of certain characteristics such as sexual orientation, ethnicity, race or religious beliefs.

### **Baines' Whole School Approach**

The school actively seeks to raise awareness of and prevent all forms of child-on-child abuse by:

1. Educating all governors, its senior leadership team, staff, students, and parents/carers about this issue.

This includes training all governors, the senior leadership team, and staff on the nature, prevalence and effect of child-on-child abuse, and how to prevent, identify, and respond to it.

This includes:

- i. Contextual Safeguarding
  - ii. the identification and classification of specific behaviours, including digital behaviours
  - iii. the importance of taking seriously all forms of child-on-child abuse (no matter how 'low level' they may appear) and ensuring that no form of child-on-child abuse is ever dismissed as horseplay or teasing
  - iv. social media and online safety, including how to encourage children to use social media in a positive, responsible and safe way, and how to enable them to identify and manage abusive behaviour online.
2. Educating children about the nature and prevalence of child-on-child abuse, positive, responsible and safe use of social media, and the unequivocal facts about consent, via PSHE and the wider curriculum are important in ensuring our students can identify child-on-child abuse. *For example, by addressing gender inequality in a statistics class, or by reviewing literature in an English class which addresses bullying and its effect on mental health.*
  3. Students are frequently told what to do if they witness or experience such abuse, the effect that it can have on those who experience it and the possible reasons for it, including vulnerability of those who inflict

such abuse. They are regularly informed about the School's approach to such issues, including its **zero tolerance policy** towards all forms of child-on-child abuse. Educating students about consent includes teaching them basic facts such as:

- i. a child under the age of 13 can never consent to any sexual activity
- ii. the age of consent is 16
- iii. sexual intercourse without consent is rape

4. Engaging parents/carers on these issues by

- i. keeping them informed through regular updates
- ii. asking parents/carers what they perceive to be the risks facing their child and how they would like to see the School address those risks,
- iii. involving parents/carers (where appropriate) in the review of School policies and lesson plans, and iv. encouraging parents to hold the School to account on this issue, in part as a result of visibility of this policy.

5. Supporting the on-going welfare of the student body by drawing on multiple resources that prioritise student mental health, and by providing in-school counselling and therapy to address underlying mental health needs.

These interventions can be 'de-clinicised' and brokered through a positive relationship with the School and its staff. Some staff are trained to meet low-level mental health difficulties within the students, and all staff know how to make referrals to these trained members of staff.

6. Working with governors, senior leadership team, and all staff, students and parents/carers to address equality issues, to promote positive values, and to encourage a culture of tolerance and respect amongst all members of the School community

7. Creating conditions in which our students can aspire to, and realise, safe and healthy relationships fostering a whole-school culture:

- which is founded on the idea that every member of Baines School is responsible for building and maintaining safe and positive relationships, and helping to create a safe School environment - in which violence and abuse are never acceptable
- in which students are able to develop trusting relationships with staff, and in which staff understand, through regular discussion and training, the importance of these relationships in providing students with a sense of belonging, which could otherwise be sought in problematic contexts
- in which students feel able to share their concerns openly, in a non-judgmental environment, and have them listened to
- which

(i) proactively identifies positive qualities in students

- (ii) nurtures these qualities
- (iii) teaches and encourages students to think about positive hopes for the future
- (iv) supports students in developing small-scale goals that enable realistic ambitions.
  - where we respond to cases of child-on-child abuse promptly and appropriately

8. ensuring that all child-on-child abuse issues are fed back to our safeguarding team so they can spot and address any concerning trends and identify students who may be in need of additional support. And by challenging the attitudes that underlie such abuse, both inside and outside the classroom.

### **Multi-Agency Working**

Baines School actively engages with its Lancashire Safeguarding Children's Board in relation to child-on-child abuse, and works closely with, for example, children's social care, the police, Multi-Agency Safeguarding Hub and all other relevant agencies in accordance with the Lancashire Safeguarding Children's Board procedures, and other schools.

The relationships the School has built with these partners are essential to ensuring that the School is able to prevent, identify early, and appropriately handle cases of child-on-child abuse. They help the School to:

- develop a good awareness and understanding of the different referral pathways that operate within our local context, as well as the preventative and support services which exist
- ensure that its students are able to access the range of services and support they need quickly
- support and help inform the School's local community's response to child-on-child abuse ● put risk assessments in place as appropriate.
- increase the School's awareness and understanding of any concerning trends and emerging risks in its local area to enable it to take preventative action to minimise the risk of these being experienced by its students.

The School actively refers concerns and allegations of child-on-child abuse where necessary to children's social care, the police, Lancashire MASH, and/or other relevant agencies in accordance with the Local Safeguarding Partnership's procedures. This is particularly important because child-on-child abuse can be a complex issue, and even more so where wider safeguarding concerns exist. We recognise that it is often not appropriate for one single agency (where the alleged incident cannot appropriately be managed internally by the School itself) to try to address the issue alone – it requires effective partnership working. **Responding to concerns or allegations of child-on-child abuse** **General principles**

It is essential that all concerns and allegations of child-on-child abuse are handled sensitively, appropriately and promptly. The way in which they are responded to can have a significant impact on our School environment.

Any response should:

- include a thorough investigation of the concern(s) or allegation(s), and the wider context in which it/they may have occurred (as appropriate) – depending on the nature and seriousness of the alleged incident(s), it may be appropriate for the police and/or children’s social care to carry out this investigation
- treat all children involved as being at potential risk

*while the child who is allegedly responsible for the abuse may pose a significant risk of harm to other children, s/he may also have considerable unmet needs and be at risk of harm themselves. Baines will ensure that a safeguarding response is in place for both the child who has allegedly experienced the abuse, and the child who has allegedly been responsible for it, and additional sanctioning work may be required for the latter*

- consider:
  - that the abuse may indicate wider safeguarding concerns for any of the children involved, and consider and address the effect of wider sociocultural contexts – such as the child’s/ children’s peer group (both within and outside the School); family; the School environment; their experience(s) of crime and victimisation in the local community; and the child/children’s online presence. We will consider what changes may need to be made to these contexts to address the child/ children’s needs and to mitigate risk and:
  - the potential complexity of child-on-child abuse and of children's experiences, and consider the interplay between power, choice and consent. While children may appear to be making choices, if those choices are limited they are not consenting,
  - the views of the child/children affected. Unless it is considered unsafe to do so (for example, where a referral needs to be made immediately), the DSL should discuss the proposed action with the child/ children and their parents/carers, and obtain consent to any referral before it is made.
  - The School should manage the child/children’s expectations about information sharing, and keep them and their parents/carers informed of developments, where appropriate and safe to do so. It is particularly important to consider the wishes of any child who has allegedly been abused, and to give that child as much control as is reasonably possible over decisions regarding how any investigation will be progressed and how they will be supported.

**What should you do if you suspect either that a child may be at risk of or experiencing abuse by their peer(s), or that a child may be at risk of abusing or may be abusing their peer(s)?**

If a member of staff thinks for whatever reason that a child may be at risk of or experiencing abuse by their peer(s), or that a child may be at risk of abusing or may be abusing their peer(s), they should discuss their concern with the DSL without delay (in accordance with the very clear protocols set out in our safeguarding policy) so that a course of action can be agreed.

Where a child is suffering, or is likely to suffer from harm, it is important that a referral to children’s social care (and, if appropriate, the police) is made immediately.

Anyone can make a referral. Where referrals are not made by the DSL, the DSL should be informed as soon as possible that a referral has been made (see Safeguarding Policy).

If a child speaks to a member of staff about child-on-child abuse that they have witnessed or are a part of, the member of staff should listen to the child and use open language that demonstrates understanding rather than judgement. For further details please see the procedures set out in the safeguarding policy.

### **How will the School respond to concerns or allegations of child-on-child abuse?**

The DSL will discuss the concern(s) or allegation(s) with the member of staff who has reported it/them and will, where necessary, take any immediate steps to ensure the safety of the child/all children affected.

Where any concern(s) or allegation(s) indicate(s) that indecent images of a child or children may have been shared online, the DSL will consider what urgent action can be taken in addition to the actions and referral duties set out in this policy, and other relevant policies, and seek specialist help in preventing the images spreading further and removing the images from the internet. **The DSL will not look at any indecent images that have been referred to them.**

The Internet Watch Foundation (IWF), for example, has a trained team that can evaluate and remove illegal images from the internet when the images are reported to them quickly. They will also share the image with the National Crime Agency's CEOP Command to facilitate an investigation. Any report to IWF will be made in consultation with the police.

Our DSL will use their professional judgement to:

- assess the nature and seriousness of the alleged behaviour, and
- determine whether it is appropriate for the alleged behaviour to be to be dealt with internally and, if so, whether any external specialist support is required.

In borderline cases the DSL may wish to consult with children's social care and/or Lancashire MASH (or equivalent), and/or other relevant agencies in accordance with the Local Safeguarding Partnership's procedures on a no-names basis (where possible) to determine the most appropriate response.

Where the DSL considers or suspects that the alleged behaviour in question might be abusive or violent on a spectrum or where the needs and circumstances of the individual child/children in question might otherwise require it, the DSL will contact children's social care and/or the police immediately and, in any event, within 24 hours of the DSL becoming aware of the alleged behaviour.

The DSL will discuss the concern(s) or allegation(s) with the agency and agree on a course of action, which may include:

- **Manage internally with help from external specialists where appropriate and possible.**

Where the alleged behaviour between peers is abusive or violent (as opposed to inappropriate or problematic – unless as stated above), scenarios listed below should ordinarily apply. However, where support from local agencies is not available, the School may need to handle concerns or allegations internally. In these cases, the School will engage and seek advice from external specialists.

- **Undertake/contribute to an inter-agency early help assessment, with targeted early help services provided to address the assessed needs of the child/children and their family.**

These services may, for example, include family and parenting programmes, responses to emerging thematic concerns in extra familial contexts, a specialist harmful sexual behaviour team, CAMHS and/or youth offending services.

- **Refer the child/children to children's social care for a section 17/47 statutory assessment.**

Where a child is suffering, or is likely to suffer from harm, it is important that a referral to children's social care (and, if appropriate, a report to the police) is made immediately. This referral will be made to children's social care in the area where the/each child lives. Depending on the safeguarding procedures issued by the Local Safeguarding Partnership in that area, there will normally be an initial review and assessment of the referral, in accordance with that area's assessment framework. As a matter of best practice, if an incident of child-on-child abuse requires referral to and action by children's social care and a strategy meeting is convened, then the School will hold every professional involved in the case accountable for their safeguarding response, including themselves, to both the/each child who has experienced the abuse, and the/each child who was responsible for it, and the contexts to which the abuse was associated.

- **Report alleged criminal behaviour to the police.**

Alleged criminal behaviour will ordinarily be reported to the police. However, there are some circumstances where it may not be appropriate to report such behaviour to the police. For example, where the exchange of youth involved sexual imagery does not involve any aggravating factors [see the school's youth involved sexual imagery policy for further information]. All concerns or allegations will be assessed on a case by case basis, and in light of the wider context.

## **Risk Assessment**

The School will always put in place a risk assessment in respect of:

- any child who is alleged to have behaved in a way that is considered to be abusive or violent,
- any child who has reportedly been abused or affected by the alleged abusive or violent behaviour by another child, or
- any child who may be at risk due to the alleged abusive or violent behaviour by another child as deemed appropriate by the DSL.

Where it is alleged that a child has behaved in a way that is considered to be inappropriate or problematic (as opposed to abusive or violent), the DSL will use their professional judgement – based on the particular concern(s) and/or allegation(s) raised, and the needs and circumstances of the individual child/children in

question – to determine whether (as explained above) it would be appropriate to contact children’s social care, and/ or to carry out a risk assessment.

Where other children have been identified as witnesses to alleged abuse or violence, consideration should also be given by the DSL to whether there might be any risks to those children, and whether a risk assessment would be appropriate in relation to any risks presenting to them.

### **Information sharing, data protection and record keeping**

When responding to concern(s) or allegation(s) of child-on-child abuse, the School will:

- always consider carefully, in consultation with children’s social care, the police and other relevant agencies (where they are involved), how to share information about the concern(s) or allegation(s) with the student(s) affected, their parents, staff, and other students and individuals,
- record the information that is necessary for the School and other relevant agencies (where they are involved) to respond to the concern(s) or allegation(s) and safeguard everyone involved,
- keep a record of the legal purpose for sharing the information with any third party, including relevant authorities, and ensure that the third party has agreed to handle the information securely and to only use it for the agreed legal purpose, and
- be mindful of and act in accordance with its safeguarding and data protection duties, including those set out in *Working Together to Safeguard Children (July 2018)* and the *HM Government advice on Information Sharing (updated in July 2018)*.

### **Disciplinary Action**

The School may wish to consider whether disciplinary action may be appropriate for any child/children involved. However, if there are police proceedings underway, or there could be, we will work in partnership with the police and/or children’s social care.

Where a matter is not of interest to the police and/ or children’s social care, the School may still need to consider what is the most appropriate action to take to ensure positive behaviour management.

Disciplinary action may sometimes be appropriate, including to:

- ensure that the child/children take(s) responsibility for and realise(s) the seriousness of their behaviour
- demonstrate to the child/children and others that child-on-child abuse can never be tolerated
- ensure the safety and wellbeing of other children.

However, these considerations must be balanced against any police investigations, the child’s/children’s own potential unmet needs, and any action or intervention planned regarding safeguarding concerns. Before deciding on appropriate action the School will always consider its duty to safeguard all children in its care from harm; the underlying reasons for a child’s behaviour; any unmet needs, or harm or abuse suffered by the child; the risk that the child may pose to other children; and the severity of the child-on-child abuse and the causes of it.

The School will, where appropriate, consider the potential benefit, as well as challenge, of using exclusion as a response, and not as an intervention, recognising that even if this is ultimately deemed to be necessary, some of the measures referred to in this policy may still be required.

For example, action may still need to be taken by the School in relation to other students who have been involved with and/or affected by child-on-child abuse. Exclusion will only be considered as a last resort and only where necessary to ensure the safety and wellbeing of the other children in the School.

In the event of any managed move, consideration must be given to sharing information with the receiving school regarding the child-on-child abuse in order to allow best protection of children in the new school. Disciplinary interventions alone are rarely able to solve issues of child-on-child abuse, and Baines will always consider the wider actions that may need to be taken, and any lessons that may need to be learnt going forwards, as set out above and below.

The School's response to concerns or allegations of child-on-child abuse should be part of on-going proactive work by the School to embed best practice and in taking a whole-school community Contextual Safeguarding approach to such abuse. As such the School's response can become part of its wider prevention work.

This response may involve the School working with the Local Authority to undertake, for example, a Contextual Safeguarding school assessment which would fit into a systems approach to Contextual Safeguarding. The response could also include the School asking itself a series of questions about the context in which an incident of child-on-child abuse occurred in the School, the local community in which the School is based, and the wider physical and online environment – such as:

- What protective factors and influences exist within the School (such as positive peer influences, examples where child-on-child abuse has been challenged, etc.) and how can the School bolster these?
- How (if at all) did the School's physical environment or the students' routes to and from the School contribute to the abuse, and how can the School address this going forwards, for example by improving the School's safety, security and supervision, or by working with local safeguarding partners to mitigate the risks to students' safety whilst travelling to and from the School?
- How (if at all) did the online environment contribute to the abuse, and how can the School address this going forwards, for example by strengthening the way in which the School encourages positive and safe use of the internet by students? ● Did wider gender norms, equality issues, and/or societal attitudes contribute to the abuse?
- What was the relationship between the abuse and the cultural norms between staff and students, and how can these be addressed going forward?
- Does the abuse indicate a need for staff training on, for example, underlying attitudes, a particular issue or the handling of particular types of abuse, or to address any victim-blaming narratives from staff?
- How have similar cases been managed in the past and what effect has this had?
- Does the case or any identified trends highlight areas for development in the way in which the School works with children to raise their awareness of and/or prevent child-on-child abuse, including by way

of the School's PSHE curriculum and lessons that address underlying attitudes or behaviour such as gender and equalities work, respect, boundaries, consent, children's rights and critical thinking and/or avoiding victim-blaming narratives?

- Are there any lessons to be learnt about the way in which Baines engages with parents/carers to address child-on-child abuse issues?
- Are there underlying issues that affect other schools in the area and is there a need for a multi-agency response?
- Does this case highlight a need to work with certain children to build their confidence, and teach them how to identify and manage abusive behaviour?
- Were there opportunities to intervene earlier or differently and/or to address common themes amongst the behaviour of other children in the School?

Answers to these questions can be developed into an action plan that will be reviewed on a regular basis by the School's leadership and the DSL. The School will, where possible and appropriate, work with the Local Authority and wider partners to deliver on this plan, possibly as part of a wider Contextual Safeguarding school assessment led by or with input from the Local Authority.