



Baines School

Nothing Without Effort



Options Booklet  
2023

# **+** **Contents**

## **Introduction from Mr McGrath** **Subject Combinations** **Option Blocks**

### **Core Subjects**

English Language GCSE  
English Literature GCSE  
Maths GCSE  
Science GCSE

### **Option Subjects**

Business Studies GCSE  
Computer Science GCSE  
Creative Arts:  
    Drama Vocational Award  
    Fine Art GCSE  
    Hospitality and Catering Vocational Award  
    Music GCSE  
    Photography GCSE  
    3D Product Design GCSE  
Geography GCSE  
Health & Social Care BTEC  
History GCSE  
Creative iMedia Cambridge National Award  
Modern Foreign Languages: French and Spanish GCSEs  
Physical Education GCSE  
Physical Education: Technical Award in Sport BTEC  
Religious Studies GCSE  
Travel & Tourism BTEC



## Welcome to our Options Booklet for 2023

Dear Year 9 Student, Parents and Carers,

Welcome to our Options Booklet for 2023. This is an exciting time in your school life where the important decisions you make over the coming weeks will help to shape your possible future career choices. It is important that you select the subjects that will help you achieve your ideas for career pathways while keeping a strong breadth to allow you to change your mind about career choice. One of the most important considerations should also be to select the subjects that you are likely to succeed in and enjoy.

This booklet is designed to provide you with some information that will help you to make informed choices about the subjects offered in Key Stage 4. You have recently had a parents' evening and school report so you should also have an idea about the subjects you are likely to do well at. Over the next few weeks there will be a range of support available for you:

For the first time you will be able to choose some of the subjects you may wish to study. Some of the subjects are compulsory and make up what is called the 'Core Curriculum'. This means you will have to study them. These subjects are: English Language, English Literature, Mathematics, Science, Religious Education (non-examined), Physical Education (practical, non-examined) and Personal Development.

Most other subjects are optional, however, there are some strong recommendations to help you make the best choices. You may be aware that there has been a massive overhaul of all GCSE qualifications by the government and every year the government produces a list of subjects that are and are not acceptable for study.

When choosing your optional subjects it is important that you find out about the course to help you make an informed choice. Consider finding out the following:

- Which subjects do you enjoy?
- Which subjects are you currently doing really well in?
- If you have a career idea, which subjects link best to that career?

- Will your choices keep your options open for the future if you are unsure about career choice?
- What type of learning suits you the best?
- How will the subject be assessed? For example, exams at the end of two years or ongoing work where every lesson really counts to complete work towards the qualification.
- Do you prefer practical subjects? Subjects that allow you to be creative? Subjects where there is a lot of essay writing? Subjects where there are shorter answer questions? Subjects where you need a lot of knowledge and facts? Subjects where you spend most of your time completing work on computers? Subjects where you have lots of deadlines to keep to as ongoing assessment so you cannot fall behind? Subjects where you get the marks from just examinations at the end of Year 11?

Please do not select the subject for any of the following reasons:

- Your friend is taking the subject
- You like your current teacher in that subject

This is because you may not be in the same class as your friend and you may not be taught by the same teacher as you currently are.

I will be available to discuss your combination choices over the next couple of weeks so please come and see me if you require any additional support.



Mr M. A. McGrath

Assistant Headteacher

In order to support students in making the most appropriate choices for Key Stage 4 and to allow flexibility, the following information gives more detail on appropriate choices.

## + Subject Combinations

### The English Baccalaureate (EBacc)

The English Baccalaureate is a route that the government recommends that students follow although it is not a qualification in itself. It recognises where students have secured a quality grade across a core of academic subjects. The English Baccalaureate is made up of **English**, **Mathematics**, the **Sciences** and a **Language**. Additionally **Geography** or **History** must be studied. (Shown in orange boxes below)

A Language	Geography or History	Non-EBacc	Non-EBacc
		Separate Science, Geography or History	Geography

For the most-able students considering A Levels in Biology, Chemistry and Physics, there is an option to study these as separate GCSE subjects. For students opting for this path they must choose Separate Science in Option Block A, C or D.

We are recommending all students to consider studying a language in Option A. However, students who are currently accessing double languages in Year 9, are strongly encouraged to take a language in Year 10.

All students must take at least one of the EBacc subjects. These subjects are:

- Triple Sciences
- A language – Spanish or French
- History
- Geography
- Computer Science

# + Option Blocks 2023

The EBacc Subjects are coloured orange in the Option Blocks in order for you to easily identify them. Non EBacc subjects are known as High Value Subjects and they have been coloured brown for identification. To qualify for the EBacc suite of subjects, a Foreign Language must be taken along with either History or Geography.

Option A	Option B	Option C	Option D
Spanish	Separate Sciences	History	Geography
French	Geography	Geography	Separate Sciences
Computer Science	History	Business Studies	History
Art	Perf. Arts - Drama	Religious Studies	Art
Travel and Tourism	Perf. Arts - Music	Health and Social Care	Photography
Creative iMedia	Creative iMedia	Physical Education	Hospitality and Catering
3D Design	Religious Studies	Health and Fitness	Health and Social Care
	Business Studies		

All students must choose a minimum of 1 orange subject. To qualify for the EBacc, a Foreign Language must be taken along with either History or Geography.

Students should choose **one** option from Blocks **A, B, C** and **D**. We may not be able to offer your first choice for one of the blocks so please indicate **a reserve** subject that you would be prepared to study, **one** for each block, still maintaining a minimum of one orange subject. First choices will be allocated wherever possible.

Students wishing to study separate sciences in Biology, Chemistry and Physics must opt for Separate Sciences in Option Block B or Option Block D (not both). Students who do not wish to select Separate Sciences will study Combined Science in Year 10 and Year 11 (see the Science page).



# + English Language Eduqas (WJEC) GCSE in English Language

Core Subject: Compulsory



## Course Outline

All students are entered for this GCSE English Language course. It is 100% externally assessed by examination over two papers. There is also a 'Spoken Language' element that is reported with the qualification, but does not count.

The examinations are broken down as follows:

### **Component 1 (40%) – 1 hour 45 mins**

'20<sup>th</sup> Century Reading and Creative Prose Writing'

Section A (20%) – Reading of a prose (fiction) extract, assessed through a range of questions

Section B (20%) – Prose Writing: a creative writing task from a choice of four

### **Component 2 (60%) – 2 hours**

'19<sup>th</sup> and 21<sup>st</sup> Century Non-Fiction Reading and Transactional/ Persuasive Writing'

Section A: (30%) - Reading of two non-fiction extracts, assessed through a range of questions

Section B: (30%) - Writing: two compulsory non-fiction writing tasks

### **Component 3: Spoken Language**

This does not count toward the final mark and grade, but will be reported with it.

Task: one presentation/speech, including Q&A.

## How can English Help Me?

This course will teach you to read a wide range of high-quality texts and be able to understand them. You will also learn to read critically, and use that knowledge to make you a better writer.

You will learn to write effectively, using Standard English appropriately, and you will use grammar correctly, whilst punctuating and spelling accurately. It is important to note the importance now placed on spelling, punctuation and grammar in subjects across the curriculum, where it is a part of the assessment criteria.

Studying this GCSE should prepare you to make informed decisions about further learning opportunities and career choices, and to use language to participate effectively in society and employment.

## Contact

Email Mr Davies: [sds@baines.lancs.sch.uk](mailto:sds@baines.lancs.sch.uk)

# + English Literature

## AQA GCSE in English Literature

Core Subject: Compulsory



GCSE English Literature texts studied by students throughout Key Stage 4

## Course Outline

All students are entered for this course, which comprises two externally assessed examinations.

### Component 1 (40%) – 1 hour 45 minutes: 'Shakespeare and the 19<sup>th</sup>-Century Novel'

Section A: Shakespeare: 'Romeo and Juliet'

Section B: The 19<sup>th</sup>-Century novel: 'A Christmas Carol'

Students study and learn to respond to the examination questions, which tests their understanding of themes, characters, language, structure and context of the texts.

### Component 2 (60%) – 2 hours 15 minutes: 'Modern Texts and Poetry'

Section A: Drama: 'An Inspector Calls'

Section B: Poetry: Power and Conflict cluster from the AQA Anthology

Section C: Poetry: response to two unseen poems

Students respond to the play and poems as above. They will also respond to two poems that they have not studied in class.

It is expected that students will purchase their own copies of the three texts. School will provide copies of the poetry anthology.

## How can English Literature Help Me?

This course allows you to experience a range of Literature with a wide variety of appeal drawn from contemporary and modern texts, texts from across the globe and texts which have had a significant influence on our English (Welsh or Irish) literary and cultural heritage.

The course is based on a skills-based approach to the study of Literature. This enables you to make 'fresh' and individual responses to each element of assessment. Many of the skills developed in this course aid you with English Language, and vice-versa.

There are a range of study guides available to help you beyond the classroom, and online resources such as BBC Bitesize can also prove helpful.

## Contact

Email Mr Davies: [sds@baines.lancs.sch.uk](mailto:sds@baines.lancs.sch.uk)

# + Mathematics

## Edexcel GCSE in Mathematics

Core Subject: Compulsory



## Course Outline

There are two tiers of entry for the GCSE Mathematics candidates: Foundation and Higher.

We take the Edexcel examination and the scheme of assessment awards the following grades:

Higher tier      Grades    4 - 9

Foundation tier    Grades    1 - 5

Students will be entered at the tier appropriate to their attainment. This will be based initially on Key Stage 3 and Year 9 performance but will be reviewed throughout the two years of the GCSE course.

### Assessment Objectives

AO1    Use and apply standard techniques.

AO2    Reason, interpret and communicate mathematically.

AO3    Solve problems within mathematics and in other contexts.

## How can Mathematics Help Me?

As a core subject Mathematics provides key skills for many other subjects and is a prerequisite for many future courses of study, employment and training. Students will increase their confidence and competence in applying their mathematical skills.

Many of our students continue to study A Level Mathematics and have regularly gone on to university courses in Mathematics, Accountancy, Engineering and other relevant courses.

Further course information is available at <https://qualifications.pearson.com/en/qualifications/edexcel-gcses/mathematics-2015.html>

## Contact

Email Mr N Houghton    [nho@baines.lancs.sch.uk](mailto:nho@baines.lancs.sch.uk)



## Course Outline

As Science is a core subject, all students continue their study of GCSE Biology, Chemistry and Physics topics from the AQA specification which they began preparing for in Year 9. We offer 2 routes:

- **GCSE Combined Science: Trilogy** covers Biology, Chemistry and Physics units of study and leads to the award of two GCSE grades ranging from 11 (two grade 1s) through to 99 (two grade 9s). This is the default choice unless you opt to choose GCSE Separate Science.
- **GCSE Separate Science** leads to the award of 3 GCSEs: GCSE Biology, GCSE Chemistry and GCSE Physics. Students considering taking Separate Sciences must opt for this in Option block A, C or D.

Although both routes can lead to study of A-level sciences, it is worth considering that Separate Science GCSEs are the preferred route. Separate Sciences is most suitable for those students who have great enthusiasm for science and are considering a science-based university course or career. Both courses lead to qualifications that can either be taken at Higher tier (grade 4-9) or Foundation tier (grade 1-5) and this is decided during year 11. All GCSE Science qualifications are examined at the end of the course and there is no coursework.

Each route is examined through 6 exams. Two for biology, two for chemistry and two for physics. For Combined Science, the exams are 75 minutes long and for the Separate Sciences, the exams are 105 minutes. Questions are a combination of multiple choice, structured, closed short answer and open response. The exams measure how students have achieved the following assessment objectives:

- AO1: Demonstrate knowledge and understanding of: scientific ideas; scientific techniques and procedures.
- AO2: Apply knowledge and understanding of: scientific ideas; scientific enquiry, techniques and procedures.
- AO3: Analyse information and ideas to: interpret and evaluate; make judgments and draw conclusions; develop and improve experimental procedures.

## How can Science Help Me?

In lessons we link practical experience with scientific ideas. We use experimentation and modelling to develop and evaluate explanations, encouraging critical and creative thought.

You will discover that knowledge and understanding in science are rooted in evidence. You will learn how scientific ideas contribute to technological change – affecting business, industry, medicine and improving quality of life. You will learn to question and discuss issues that may affect your own life and wider societies and we hope that our course will inspire you to solve real world problems!

You can follow many pathways using Science. The most popular route is A-level courses in Biology, Chemistry or Physics leading to degree courses such as Engineering, Medicine, Physiotherapy, Psychology and Astrophysics.

Further reading and resources can be found on the AQA website at <http://www.aqa.org.uk/subjects/science/gcse>

## Contact

Email Mrs Huthchinson: [jhu@baines.lancs.sch.uk](mailto:jhu@baines.lancs.sch.uk)

# +

## Business Studies

### EDEXCEL GCSE in Business Studies



## Course Outline

Everything in life involves Business. Think about that new top you bought last week and then think of what businesses made it possible for you to be wearing it right now?

The obvious ones are the shop and the manufacturing plant but what about the Cotton growers? The label makers? The delivery company? Even the companies that manage the finances of all those businesses. Thinking about all those processes and people allows you begin to understand about what Business Studies is all about.

Business is a major part of everyone's life and anybody who has a good idea about how businesses work are at an immediate advantage in the future.

Business Studies is a single award GCSE that teaches students about setting up a business, marketing and customers, people in business and business finance.

The course is assessed at the end of the second year by two written exams. The exams have a range of questions including multiple choice, short response and using a case study. The course looks at a wide range of areas including:

- How do businesses track their profit and loss?
- How do they find out what their customers want? How will they convince people to buy their products?
- How will they get the best employees and keep them?
- How will the business be affected by things outside of their control?
- How has technology changed the business world?
- How can they produce products efficiently?
- How can the business grow?

## How can Business Studies Help Me?

- It is relevant to the world of work
- Employers value the qualification
- You will gain valuable skills
- When you leave school and wish to get a job, you will understand a little more about the way a business works
- If you choose not to become an employee, you will perhaps have the skills and knowledge to start your own business.

## Contact

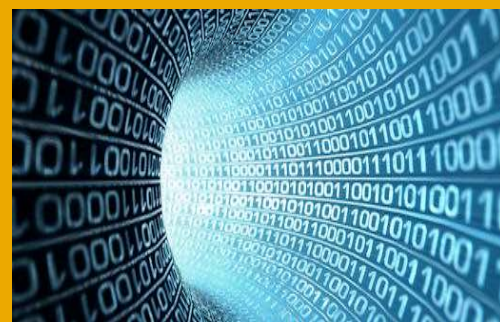
Email Mrs Dawber [edr@baines.lancs.sch.uk](mailto:edr@baines.lancs.sch.uk)





# Computer Science

## OCR GCSE in Computer Science



## Course Outline

Computer science is aimed at those who are considering a future in software or hardware engineering, with a strong focus on developing and assessing Software Engineering (programming) skills.

The course assessment consists of two written examination papers, each worth 50% of the overall mark and a classroom-based 20-hour Python programming project, which is assessed but does not contribute to a student's overall grade.

Most of the course is taught through structured blended learning, where students work at their own pace and at their own level. As such, the ability to work in a focused, independent manner is crucial for success, and students are expected to work on programming tasks at home for 2 to 3 hours a week. As such a laptop or desktop computer (not ipad) with internet access is essential to the course, though a high spec computer is not required.

Areas covered: Python Programming  
Computer Hardware  
Networking  
Algorithms  
SQL Database development

## How can Computer Science Help Me?

Computer Science enables you to develop an interest in computing and gain confidence in computational thinking and programming.

Computer Science is an ideal foundation for further study at 'A' level Computer Science, as well as an excellent springboard to an apprenticeship in Software Engineering.

There are several resource opportunities to help you in the course, including text books; specialist websites and online reinforcement exercises

## Contact

Email Mr Patel: [ipa@baines.lancs.sch.uk](mailto:ipa@baines.lancs.sch.uk)



# Creative Arts: Performing Arts Vocational Award in Drama (Tech Award)



## Course Outline

This vocational award in Performing Arts specialises in Drama and will develop students' knowledge and understanding of the drama/theatre industry and provide them with opportunities to develop associated practical skills. It covers performing, creating, event planning and career progression in theatre.

In 2015, the performing arts sector was worth £5.4 billion a year to the UK economy. This represented a growth of almost 10% from 2012 to 2013. The 10% increase was three times that of the wider UK economy during the same period. The figures showed a 46% increase in the performing arts sector since 2008.<sup>3</sup> In 2018, 77,000 people were employed in performing arts. The number of employees in performing arts had increased from 59,000 in 2013.<sup>4</sup> This highlights the importance of qualifications in developing the performing arts skills of young people.

**Unit 1: Performing** – this is an internally assessed controlled practical assessment and is worth 30%. Students will be required to perform one short piece of drama, either as a soloist (by themselves) or as part of a group (e.g., performing a monologue or duologue). Students will research suitable scripts, rehearse a chosen piece of drama and prepare a final performance.

**Unit 2: Creating** – this is an internally assessed controlled practical assessment and is worth 30%. Students will be required to create one original short piece of drama, drawing on different theatre styles of practitioners. Students will explore and develop their own theatrical ideas, research different styles/genres, create a complete original piece of drama, and review and reflect on their progression as a playwright.

**Unit 3: Performing Arts in Practice** – this is an externally assessed controlled assessment and is worth 40%. Students will plan a theatre performance/event, promote and pitch this event, and evaluate the success and impact of this event. This unit will teach students about target audience, job roles, use of social media, budgeting and presentation skills.

## How can Drama help me?

This course provides perfect preparation for all Level 3 Performing Arts pathways at local post-16 providers such as Blackpool 6th Form. Being an actor demonstrates several key skills that are keenly sought after by employers:

Independent study

Long term commitment (practice) commitment to team work (ensembles)

Organisational skills (practice, research and composition)

Listening skills

Imagination and creativity

**Please note that due to health and safety requirements when working in our specialist drama space(s), the number of students selected to join our Drama course will be limited to 20 spaces.**

**Please note that students are unable to choose Drama alongside Music.**

## Contact

Miss Addenbrooke (Teacher of Performing Arts: Drama): [rad@baines.lancs.sch.uk](mailto:rad@baines.lancs.sch.uk)

Mrs James (Teacher of Performing Arts): [jja@baines.lancs.sch.uk](mailto:jja@baines.lancs.sch.uk)

Mr Shillitoe (Head of Creative Arts): [rsh@baines.lancs.sch.uk](mailto:rsh@baines.lancs.sch.uk)

# + Creative Arts: Performing Arts Vocational Award in Music (Tech Award)



## Course Outline

This vocational award in Performing Arts specialises in Music and will develop students' knowledge and understanding of the music industry and provide them with opportunities to develop associated practical skills. It covers performing, creating, event planning and career progression in music.

In 2015, the performing arts sector was worth £5.4 billion a year to the UK economy. This represented a growth of almost 10% from 2012 to 2013. The 10% increase was three times that of the wider UK economy during the same period. The figures showed a 46% increase in the performing arts sector since 2008.<sup>3</sup> In 2018, 77,000 people were employed in performing arts. The number of employees in performing arts had increased from 59,000 in 2013.<sup>4</sup> This highlights the importance of qualifications in developing the performing arts skills of young people.

**Unit 1: Performing** – this is an internally assessed controlled practical assessment and is worth 30%. Students will be required to perform one short piece of music, either as a soloist (by themselves) or as part of a group. Students will research suitable pieces of music, rehearse a chosen piece of music and prepare a final performance.

**Unit 2: Creating** – this is an internally assessed controlled practical assessment and is worth 30%. Students will be required to create one original short piece of music, drawing on different styles of music/artists. Students will explore and develop their own musical ideas, research different styles/genres, create a complete original piece of music, and review and reflect on their progression as a composer.

**Unit 3: Performing Arts in Practice** – this is an externally assessed controlled assessment and is worth 40%. Students will plan a music performance/event, promote and pitch this event, and evaluate the success and impact of this event. This unit will teach students about target audience, job roles, use of social media, budgeting and presentation skills.

## How can Music help me?

This course provides perfect preparation for all Level 3 Performing Arts pathways at local post-16 providers such as Blackpool 6th Form. Being an musician demonstrates several key skills that are keenly sought after by employers:

Independent study

Long term commitment (practice) commitment to team work (ensembles)

Organisational skills (practice, research and composition)

Listening skills

Imagination and creativity

**Please note that due to health and safety requirements when working in our specialist music space(s), the number of students selected to join our Music course will be limited to 20 spaces.**

**Please note that students are unable to choose Music alongside Drama.**

## Contact

Mrs James (Teacher of Performing Arts: Music): [jj@baines.lancs.sch.uk](mailto:jj@baines.lancs.sch.uk)

Mr Shillitoe (Head of Creative Arts): [rsh@baines.lancs.sch.uk](mailto:rsh@baines.lancs.sch.uk)

# + Creative Arts: AQA GCSE in Fine Art



## Course Outline

The AQA Fine Art course has been devised to combine the necessary breadth and depth of study with opportunities to use a variety of materials in order to build both confidence and experience to study the subject further.

The areas of study that the students will focus on include drawing and painting, print-making and three-dimensional design.

The course comprises of 60% coursework and 40% practical exam

Coursework: Students will be expected to complete at least two sketchbooks, which support final pieces on a given theme. Sketchbooks are mainly homework based. Final pieces are completed in lessons. This work will form their Coursework Portfolio.

Practical Exam: At the end of the course the students will be given an external examination paper issued by AQA. The paper includes a range of themes to which students make a personal response. They have a number of weeks to fully prepare for the exam.

## How can Fine Art Help Me?

Over the years our students have gone on to further education and employment in Television, Film, Architecture, Fashion design, Advertising, Interior design, Graphic design, Illustration and Theatre.

The type of student that will perform well will have an interest in the world of Art, the ability to extend effectively their personal creative boundaries, work independently, listen to and act upon advice and be willing to record and evaluate their planning.

For such a student the rewards are interesting and fruitful.

Browse some of our student work at: [www.flickr.com/groups/bainesartanddesign](http://www.flickr.com/groups/bainesartanddesign)

## Contact

Email Mrs Angell (Assistant Subject Leader/Teacher of Art): [jal@baines.lancs.sch.uk](mailto:jal@baines.lancs.sch.uk)

Email Mr Shillitoe (Head of Creative Arts): [rsh@baines.lancs.sch.uk](mailto:rsh@baines.lancs.sch.uk)

**Please note you cannot choose 3D Product Design alongside Fine Art**

# + Creative Arts: Eduqas Level 1/2 Vocational Award in Hospitality & Catering (Tech Award)



## Course Outline

Our Level 2 Vocational Award in Hospitality & Catering will develop students' knowledge and understanding of the hospitality and catering sector and provide them with opportunities to develop associated practical skills. This course will cover the hospitality and catering industry and hospitality and catering in action.

This course has been designed to support learners in schools and colleges who want to learn about this vocational sector and the potential it can offer them for their careers or further study. It is most suitable as a foundation for further study. This further study would provide learners with the opportunity to develop a range of specialist and general skills that would support their progression to employment. Employment in hospitality and catering can range from waiting staff, receptionists and catering assistants to chefs, hotel and bar managers and food technologists working for supermarket chains. All of these roles require further education and training either through apprenticeships or further and higher education.

This Vocational Award in Hospitality and Catering is assessed through a combination of internal and external assessment, including one theory exam and a practical assessment.

**Unit 1: The Hospitality and Catering Industry** – this is a written exam, lasting 1hr 20mins and is worth 40% of the qualification. This exam will test students on the ability to understand areas such as how industry providers operate, health and safety and food hygiene.

**Unit 2: Hospitality and Catering in Action** – this is an internally assessed controlled assessment and is worth 60% of the qualification. This controlled assessment requires students to complete a practical catering project focusing the importance of nutrition, menu planning, skills and techniques required when prepping and cooking dishes, and evaluation skills.

## How can Hospitality & Catering Help Me?

After completing the WJEC Vocational Award in Hospitality and Catering learners might be interested in progressing to other qualifications relevant to working in the sector, such as:

WJEC Level 3 Applied Certificate / Diploma in Food Science and Nutrition

Level 2/Level 3 Diplomas in Hospitality and Catering

Level 2/Level 3 Diplomas in Professional Cooking

Level 3 Diploma in Hospitality and Tourism Management

**Please note that due to health and safety requirements when working in our specialist teaching kitchen, the number of students selected to join our Hospitality and Catering course will be limited to 20 spaces.**

## Contact

Email Mr Shillitoe (Head of Creative Arts): [rsh@baines.lancs.sch.uk](mailto:rsh@baines.lancs.sch.uk)



# Creative Arts: AQA GCSE in Photography



## Course Outline

The coursework consists of a portfolio of work and accompanying mounted final pieces. The portfolio is designed to provide students with a range of experiences and skills that cover the subject of 'Photography'. The course comprises of 60% coursework and 40% practical exam.

Some areas covered are:

- Photographic Montage
- Photoshop Manipulation
- Documentary Photography
- Portraiture
- Movement and Action
- Shape, Colour and Texture

Exemplar work is available to view in the Creative Arts department, as well as on Moodle and Flickr. Work is also on display in the ILC and Refectory.

Students will be expected to have access to a camera that they can use outside of school. Mobile phone cameras are not suitable.

Due to the high demands of a coursework-heavy subject, students are expected to develop good time management skills, as well as a positive work ethic. Students are also expected to be confident when using ICT.

## How can Photography Help Me?

In a society where the captured image has become an instant method of expression, GCSE Photography provides an understanding to the theories and practices of this form of communication. Students develop their own visual language, as well as their confidence. Students are expected to regularly evaluate their work, and this helps with their written communication and reasoning skills.

Students who partake in creative subjects at GCSE have gone on to study these subjects at A-Level, and then enjoyed creative degrees in areas such as Product Design, Architecture, Graphics and Photography.

There are several resource areas on the Creative Arts Departments Moodle pages, as well as work on the Baines Photography Flickr group: [www.flickr.com/bainesphotography](http://www.flickr.com/bainesphotography)

## Contact

Email Mr Cropper (Teacher of Photography): [wcp@baines.lancs.sch.uk](mailto:wcp@baines.lancs.sch.uk)

Email Mr Shillitoe (Head of Creative Arts): [rsh@baines.lancs.sch.uk](mailto:rsh@baines.lancs.sch.uk)

# + Creative Arts: AQA GCSE in 3D Product Design



## Course Outline

Through this 3D Design course students will design, prototype and make a range of products that are both functional and stylish, drawing upon intellectual, creative and practical skills. Please note that whilst this course focusses on developing and producing 3D artefacts, it is an artistic course that requires students to produce sketchbooks and aesthetically pleasing products. The core content for 3D Design will primarily feature product design and students will develop and apply knowledge and understanding from several sources and relate them to historical, contemporary, cultural and creative contexts. Students will generate responses that address specific needs determined by external factor, such as the requirements of an individual client's expectations or the needs of an intended audience.

Areas covered include:

Sketching

Rendering

Portfolio building techniques

Modelling using various materials, including acrylics, wood, paper, card & styrofoam

Practical projects using a variety of materials

Properties and functions of modern and more traditional materials.

**There is also scope and potential for students to explore the use of materials in our workshop using traditional workshop tools, as well as other media including textiles.**

This course is assessed in two parts:

**Component 1:** Portfolio submission assessed as a whole (60%)

**Component 2:** Non-Exam assessment (40%)

## How can 3D Product Design Help Me?

Students should consider this subject if they wish to gain a greater understanding of the properties of materials and their suitability in a modern design world. It serves as an excellent springboard for students looking to study Product Design at post 16 or develop skills in the manufacturing industry at a higher level.

## Contact

Mrs Burns (Teacher of 3D Product Design): [cbu@baines.lancs.sch.uk](mailto:cbu@baines.lancs.sch.uk)

Mrs Angell (Assistant Subject Leader for Creative Arts): [lal@baines.lancs.sch.uk](mailto:lal@baines.lancs.sch.uk)

Mr Shillitoe (Head of Creative Arts): [rsh@baines.lancs.sch.uk](mailto:rsh@baines.lancs.sch.uk)

**Please note you cannot choose 3D Product Design alongside Fine Art**



# Geography

## Edexcel GCSE in Geography A



## Course Outline

Students will study a range of Physical and Human topics throughout the two years which are relevant, up-to-date and explore our ever-changing world so that we all become great, employable, global citizens.

They will be examined through three exams. All three exams last for 1½ hours and will be taken at the end of the course. The first two contribute 37.5% each towards the final mark whilst the last one accounts for 25% of the final GCSE grade. Students will experience fieldtrips and the data collected will be used to help answer questions in final exam – paper 3.

**Paper 1 – The Physical Environment**      Topics covered: The Changing Landscapes of the UK  
Weather Hazards & Climate Change  
Ecosystems, Biodiversity & Management

**Paper 2 – The Human Environment**      Topics covered: Changing Cities  
Global Development  
Resource Management

**Paper 3 – Fieldwork and UK Challenges**      Topics covered: Geographical Investigations – Physical Environments  
Geographical Investigations – Human Environments  
UK Challenges

## How can Geography Help Me?

Geographers can: make a concise report; handle data; ask questions/find answers; make decisions about an issue; analyse material; organise themselves; think creatively and independently.

Geographers are: Good communicators; spatially aware; socially, economically and environmentally aware; problem solvers; good team players; computer literate; flexible thinkers.

Possible Careers include; Air traffic controller, Countryside Officer/Ranger, Geologist, Landscape Architect, Town Planner, Travel Agent, Pilot/Navigator, Archaeologist.....or even a Geography Teacher! (and many more).

## Contact

Email Mrs Mycock: [smk@baines.lancs.sch.uk](mailto:smk@baines.lancs.sch.uk)





# Health and Social Care

## BTEC Tech award in Health and Social Care



**96% of social care workers said they feel their work makes a difference.**

## Course Outline

This course will give you the opportunity to study how people grow and develop over the course of their lives, from infancy to old age, and the factors that may affect this, such as major life changing events like marriage or parenthood. You will learn how people adapt to these changes as well as the types of support available to help them. You will also learn about the different health and social care services, and about 'care values' and their importance in making sure that the people who use these services get the care they need. You will develop skills in interpreting data about someone's state of health in order to design a plan that will allow them to improve their health and wellbeing.

What is the health and social care sector?

About 3 million people in the UK work in health and social care. In healthcare, this includes jobs such as doctors, pharmacists, nurses, midwives, healthcare assistants and administrators, while social care roles include care assistants, social workers, occupational therapists and counsellors.

Demand for both health and social care is likely to continue to rise, so it is sure to continue to play a key role in UK society, and the demand for people to fill these vital jobs will increase.

How will I be assessed?

You will complete three components of work, two are internally assessed and one is an externally assessed examination which is taken in Year 11. The internally assessed components are set by the exam board each year and are sat in class under supervision. Good attendance is vital to make good progress in this course as if students miss class during the assessment period they will have to attend catch up sessions after school. Each component contributes towards the final grade.

## How can Health and Social Care Help Me?

When you have completed this qualification, you will have developed a practical understanding of the health and social care sector. Because you will be building useful skills not generally covered in GCSE courses, you will have a better understanding of whether this is an area you want to continue to study. This course will also help you develop transferable skills and knowledge, such as self-evaluation and research skills, which will benefit you wherever you progress to next.

After you have finished this course you may want to go on to further study, such as A levels, BTECs or a mixture of both. Or you might want to find work in the health and social care sector as a trainee or apprentice.

## Contact

Email Mrs Dawber [edr@baines.lancs.sch.uk](mailto:edr@baines.lancs.sch.uk)





## Course Outline

This is an exciting history course that covers key events in British and world history. GCSE History students will sit two examination papers.

Paper 1: Understanding the Modern World

- America 1920-1973
- Conflict and tension 1950-1975

Paper 2: Shaping the Nation

- Britain: Health and the People
- Norman England c1066-c1100

## How can History Help Me?

History at Baines is a really interesting course. It gives you the opportunity to try to understand the world today by considering the key events of the last century.

History is not all about learning dates. GCSE History requires you to have opinions, to be an expert in analysing evidence, to express yourself clearly both in writing and on paper.

History is a useful subject to do. It teaches you skills such as gathering and analysing evidence, backing up your opinions carefully, writing well-organised reports or essays and researching a topic thoroughly. By the end of the course, you will accept no-one's opinion at face value without considering whether it is reliable or biased.

History trains you for many careers. Think of any job which requires you to explain things clearly while examining lots of sources of information. History is relevant to any career especially if you are considering being a journalist, lawyer, conservationist/ environmentalist, secretary, accountant, TV researcher, policeman/ policewoman etc. Even if you have decided that you enjoy science; engineers and scientists need to be able to write clear reports.

History is a well-respected qualification. Universities and employers value History, as a History student is one who can write clearly, research information independently and form their own opinions.

## Contact

Email Mr Paterson: [tpn@baines.lancs.sch.uk](mailto:tpn@baines.lancs.sch.uk)



## Creative iMedia Cambridge National Award in iMedia



### Course Outline

Digital Media is a key part of many areas of our everyday lives and vital to the UK economy. Production of digital media products is a requirement of almost every business so there is huge demand for a skilled and digitally literate workforce. This course will provide you with the skills for further study in subjects such as media, journalism, design or business.

#### Unit R093: Creative iMedia in the Media Industry (40% Exam)

- In this unit you will learn about the sectors, products and job roles that form the media industry.
- You will learn the legal and ethical issues considered and the processes used to plan and create digital media products.
- You will learn how media codes are used within the creation of media products to convey meaning, create impact and engage audiences.

#### Unit R094: Visual Identity and Digital Graphics (25% coursework mandatory unit).

- In this unit you will learn how to develop brands and visual identities for clients.
- You will also learn to apply the concepts of graphic design to create original digital graphics which incorporate your visual identity to engage a target audience.
- You will also learn a range of design skills using Photopea and Pixlr.

#### Component 3: Interactive Digital Media (35% coursework optional unit).

- In this unit you will learn to design and create interactive digital media products for chosen platforms.
- Interactive digital media products are found across the media industry, in games, websites and apps, and learning.
- You will learn to select, edit and repurpose multimedia content of different kinds and create the interactive elements necessary for an effective user experience.

Assignments are set by the exam board, completed and assessed in school and moderated by the exam board.

### How can National Creative iMedia Level 2 Help Me?

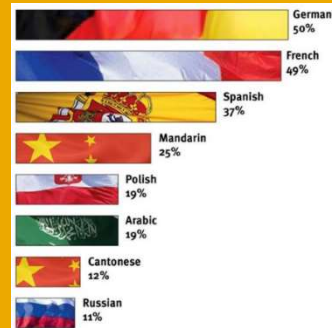
This course prepares you for a range of creative and technical job roles within the media industry and will provide you with the skills require to further your career in media, journalism and design. The digital media industry is an exciting sector which is growing exponentially and will continue to dominate our lives in the near future.

You can continue to study Creative iMedia after Year 11 with Level 3 Cambridge National courses at both Blackpool Sixth Form College and Blackpool and Fylde College. Some of our students go on to study at university and take courses such as Media Studies and Digital Design.

### Contact

Email Mr Patel: [ipa@baines.lancs.sch.uk](mailto:ipa@baines.lancs.sch.uk)

# + Modern Foreign Languages AQA GCSE in French and Spanish



Languages rated by UK managers  
as useful to their business.

## Course Outline

### You will study:

**Theme 1** - Relationships with family and friends; Marriage/partnership; Social media; Mobile technology; Music; Cinema and TV; Food and eating out; Sport; Customs and festivals in French-speaking/ Spanish-speaking countries / communities;

**Theme 2** - Home, town, neighbourhood and region; Charity/voluntary work; Healthy/unhealthy living; The environment; Poverty/homelessness; Travel and tourism;

**Theme 3** - My studies; Life at school/college; Education post-16; Jobs, career choices and ambitions

There are **4 exams** that test each skill: Listening; Reading; Speaking; Writing.

Each exam is worth 25% of the total GCSE and is examined at the end of Year 11.

**Listening** exam will contain a variety of comprehension style questions.

**Reading** exam will contain a variety of comprehension style questions and translation into English.

**Speaking** exam will contain a roleplay, a photocard and general conversation

**Writing** exam will contain translation into French / Spanish and extended writing questions.

Independent **vocabulary learning** is a requisite for success and students will regularly be tested on this learning.

## How Can Languages Help Me?

Britain needs employees with good language skills. In our 21<sup>st</sup> century global market place, the ability to communicate in a foreign language has never been more important.

Studying a language to GCSE is an enjoyable and intellectually stimulating experience; you will gain an awareness and appreciation of the different perspectives of other cultures.

Employment prospects for linguists are very bright indeed; in fact, recent surveys show that language graduates have the highest employment rates after medicine & law.

**Further reading:** [www.whystudylanguages.ac.uk](http://www.whystudylanguages.ac.uk)

<https://www.pearson.com/uk/educators/schools/subject-area/modern-languages/skills-for-future-success/your-future-career.html>; [https://www.pearson.com/content/dam/one-dot-com/one-dot-com/uk/documents/subjects/modern-languages/A2567\\_Pearson\\_MFL\\_7Reasons\\_infographic.pdf](https://www.pearson.com/content/dam/one-dot-com/one-dot-com/uk/documents/subjects/modern-languages/A2567_Pearson_MFL_7Reasons_infographic.pdf)

**Further resources:** Kerboodle; Memrise; Quizlet

## Contact

Email Mrs Davies [bds@baines.lancs.sch.uk](mailto:bds@baines.lancs.sch.uk)



*Examination PE is about applying theory to practice.*

## Course Outline

GCSE PE consists of a range of topics including the body systems (e.g. muscular, skeletal) health, fitness, training, diet, sports psychology, sponsorship, media, drugs in sport, and sports injuries & physiotherapy.

The practical component assesses sporting performance in three different sports: one team sport, one individual sport, the third can be from either a team or individual sport or activity. Students can only be assessed in activities listed in the specification.

40% Practical Performance.

2 lessons over two weeks. Students are assessed on their practical performance in 3 different sports & an ability to analyse and evaluate practical performance.

60% Theory.

3/4 lessons over two weeks, assessed through two written exams.

## How can Physical Education Help Me?

GCSE Physical Education offers an enjoyable and innovative way of learning more about PE & Sport. The course covers a range of exciting topics which helps us to understand the world of sport and how the human body works to enable us to perform in a sporting setting. The qualification combines theoretical work and practical performance in different ways, which are suited to the different learning styles of the students.

Physical education lends itself to a range of careers in sports and fitness as well as other industries that you may not have considered before. For example, did you know that many nutritionists, physical therapists and chiropractors have a degree in PE? Some careers that you could consider doing with PE include;

- PE teacher
- Physiotherapist
- Sport Scientist
- Sports coach/consultant
- Sports policy at local and national level
- Diet and fitness instructor
- Personal trainer

## Contact

Email Mrs Blackwell: [kbl@baines.lancs.sch.uk](mailto:kbl@baines.lancs.sch.uk)



# Physical Education: BTEC LEVEL 1/LEVEL 2 Technical Award in Sport



## Course Outline

Sport, activity and fitness is a rapidly growing industry; it is expected to increase in size by 11 per cent in 2022. There are currently over 400,000 jobs in the UK. There has never been a better time to study sport, activity and fitness. Study of this sector at KS4 will complement GCSE study through providing an opportunity for practical application alongside conceptual study. Whilst we have delivered BTEC Sport for a number of years, this is a new course for 2022 that is up to date with a rapidly changing and evolving industry.

**Component 1: Preparing Participants to Take Part in Sport and Physical Activity** (30% of course assessed via a 5 hour supervised assessment)

We will investigate the different types of physical activity and providers, the needs of participants, barriers to participation and ways to overcome these barriers. Equipment and technology required to take part in sport is also included. Learners will also develop an understanding of anatomy and physiology as they learn how to plan and deliver a warm-up to prepare participants to take part in sport and physical activity.

**Component 2: Taking Part and Improving Other Participants Sporting Performance** (30% of the course assessed via a 4 hour supervised assessment).

We will investigate the components of fitness and how they are used in different types of sport; we will take part in practical sport learning the rules and regulations of that sport; we will look at ways to improve other participants sporting performance through planning and delivering sports drills and conditioned practices.

**Component 3: Developing Fitness to Improve Other Participants Performance in Sport and Physical Activity** (40% of the course assessed via a 1 hour 30 min exam)

We will use theoretical knowledge and understanding of applied anatomy and physiology, movement analysis and physical training to analyse and evaluate performance and devise informed strategies for improving their own practical performance. This external assessment is based on a written assessment that requires learners to demonstrate that they can identify and use effectively an appropriate selection of skills, techniques, concepts, theories and knowledge from across the whole qualification in an integrated way.

Assignments are set by the exam board, completed and assessed in school and moderated by the exam board.

## How can Physical Education Help Me?

It is a “real” subject focused on a real industry – all of our work is rooted in real-life scenarios and build skills that you will use again and again.

You can continue to study Sport, Activity and Fitness after Year 11 with Level 3 BTEC courses at both Blackpool Sixth Form College and Blackpool and Fylde College.

## Contact

Email Mrs Blackwell [kbl@baines.lancs.sch.uk](mailto:kbl@baines.lancs.sch.uk)



# Religious Studies

## OCR Philosophy & Applied Ethics



*Y10 students visit places with cultural significance to Religious Studies*

## Course Outline

The course consists of three different modules which encourage you to develop the necessary knowledge, understanding and skills to engage in debate and discussion about life in our modern diverse society. Students will be encouraged to engage with questions of belief, values and purpose and their influence on human life. You will have the opportunity to reflect on and develop your own values, beliefs and attitudes in the light of what you have learned and apply this to your own emerging role as adults in our increasingly complex global community. You will follow a course of study dealing with the beliefs and teachings and practices of both Christianity and Islam. These contribute 50% towards the final grade.

Four themes will be studied from a philosophical and ethical perspective. They are:

- Relationships & Families
- The Existence of God
- Religion, Peace & Conflict
- Dialogue between religious & non-religious beliefs and attitudes

## How can Religious Studies Help Me?

RS is an important subject for everybody, not just because of its significance in current world affairs, but because it links so strongly into many other fields – music, art, history, politics – the list is endless.

RS can help:

- Promote respect for self and others
- Contribute to an understanding of history & culture
- Enhance our understanding of global affairs
- Develop personal well-being & happiness
- Safeguard ethical standards in public life

“We discuss issues that make me look inside myself & think deeply about the world, behaviour, my personality, my beliefs.”

## Contact

Email Mrs Wild: [swd@baines.lancs.sch.uk](mailto:swd@baines.lancs.sch.uk)



# Travel & Tourism

## BTEC Tech Award in Travel and Tourism



## Course Outline

*IT facilities are used every lesson to support students in completing their assignments.*

The Travel and Tourism Industry is a fascinating area to study and, despite the pandemic, is the fastest growing industry in the UK. Whilst we have delivered Travel and Tourism for a number of years, this course was new in 2022 and is up to date with a rapidly changing and evolving industry.

### **Component 1: Travel and Tourism Organisations and Destinations** (30% of course assessed via a 10 hour assignment)

We will investigate travel and tourism organisations in the UK, their ownership, aims, key products and services, and how they work together. We will explore the role of different consumer technologies within the travel and tourism industry. Learners will understand the different types of tourism and different types of visitor and will investigate the features of and routes to popular tourist destinations.

### **Component 2: Customer Needs in Travel and Tourism** (30% of the course assessed via an 11 hour assignment).

We will investigate how organisations use market research to identify travel and tourism trends and identify customer needs and preferences. We will apply our understanding by exploring how specific needs are met by organisations and how travel planning meets customer needs and preferences.

### **Component 3: Influences on Global Travel and Tourism** (40% of the course assessed via a 2 hour exam)

We will explore the different factors that may influence global travel and tourism, and how travel and tourism organisations and destinations respond to these factors. We will examine the potential impacts of tourism at global destinations and how destinations can manage the impacts of tourism and control tourism development to achieve sustainable tourism

Assignments are set by the exam board, completed and assessed in school and moderated by the exam board.

## How can Travel & Tourism Help Me?

A “real” subject focused on a real industry – all of our work is rooted in real-life scenarios and build skills that you will use again and again.

Gain a huge number of skills – use ICT every lesson, research, work in teams, create presentations, generate business reports.

You can continue to study Travel and Tourism after Year 11 with Level 3 BTEC courses at both Blackpool Sixth Form College and Blackpool and Fylde College. Some of our students go on to study at university and take courses such as International Tourism Management.

## Contact

Email Mr Mycock: [amk@baines.lancs.sch.uk](mailto:amk@baines.lancs.sch.uk)



# Options Form 2023

Name: .....

Form: 9.....

All students must choose a minimum of 1 orange subject. To qualify for the EBacc suite of subjects, a Foreign Language together with **EITHER** History or Geography must be selected. Students should choose **one** option from Blocks A, B, C and D. In the unlikely event that we cannot offer your first choice for one of the blocks, please indicate **a reserve** subject that you would be prepared to study, **one** for each block, still maintaining a minimum of one orange subject.

This form should be completed and returned to School Office no later than Friday 10th March 2023

Option A	First Choice	Reserve	Option B	First Choice	Reserve
Spanish			Separate Sciences		
French			Geography		
Computer Science			History		
Art			Perf. Arts - Drama		
Travel and Tourism			Perf. Arts - Music		
Creative iMedia			Creative iMedia		
3D Design			Religious Studies		
			Business Studies		

Option C	First Choice	Reserve	Option D	First Choice	Reserve
History			Geography		
Geography			Separate Sciences		
Business Studies			History		
Religious Studies			Art		
Health and Social Care			Photography		
Physical Education			Hospitality and Catering		
Health and Fitness			Health and Social Care		

Students wishing to study the three separate science GCSEs in Biology, Chemistry & Physics must opt for Separate Sciences in Option Block B or Option Block D (not both). If you do not make a choice here, you will automatically follow the GCSE Science Trilogy course worth two GCSEs.